



POWER AND MORE

We are your partner company for **customized complete solutions** and economical **series production**

www.deutronic.com



DEUTRONIC

elektronik gmbh

Power-Supplies-Electronics • Test- and Measurement Systems • EMC-Lab

EDWANZ group



The Deutronic Elektronik GmbH ...



... is an innovative and reliable partner for realising customized projects. The main focus is the production of mains adapters, power supplies, battery management systems as well as test and inspection systems including the associated software. Equally important business sectors are the development and production of power electronics for industrial applications in:

- Industry electronics
- Automation
- Telecommunication
- Measuring and control engineering
- Vehicle technology



Based on our many years experience in equipment engineering, our employees expertise, the innovative solutions of our development and production department, we are able to offer our customers competitive advantages through:

- innovative and reliable products
- skilled consultancy through the selection of proven solutions to problems
- professional support for the implementation of customer-specific equipment
- extensive customer and product support
- ability to deliver worldwide
- profitable price-performance ratio
- products with international safety tests such as CE, UL etc.
- quality management system, certified by BVQI according to DIN EN ISO 9001:2000



Contents

Page

• Power Supplies for TS35-rail	3
• DC-UPS Uninterruptable Power Supplies	4
• Controllable Power Supplies	5
• 19" Power Supplies	5
• Modular Power Supplies	6
• Flush-mounting Power Supplies	6
• E-Line Power Supplies	7
• Open Frame Power Supplies	7
• AC Adapter (Plug/Wallmounting and Desktop Version)	8
• DC/DC Converter for vehicles	9
• DC/DC Converter for PCB	10
• High voltage modules	11
• DC/DC Converter for TS-35 rail and 19"	11
• Intelligent Charging Computer	12
• Conveying Systems and Recharge Stations	13
• Test and Measurement Systems	14
• Customized design	16
• Systems Engineering	18
• EDWANZ Partner Companies	19
• Worldwide Service	23

Power Supplies for TS35-rail



Economy-Line



5 Watt - 480 Watt

Type	Input	Output VDC					Parallel connectable	Output adjustable
		5	12	15	24	48		
E-TOP5	100-240VAC	•	•	•	•	•		•
E-TOP10	100-240VAC	•	•	•	•	•		•
E-TOP18	100-240VAC	•	•	•	•	•		•
E-TOP30	100-240VAC	•	•	•	•	•		•
E-TOP60	100-240VAC	•	•	•	•	•		•
E-TOP120	115/230VAC switchable	•	•	•	•	•	option	•
E-TOP240	115/230VAC autorange	•	•	•	•	•	•	•
E-TOP240/3W	3AC 400-500VAC	•	•	•	•	•		•
E-TOP480	230VAC	•	•	•	•	•		•
E-TOP480/3W	3AC 400-500VAC	•	•	•	•	•		•

Professional-Line



20 Watt - 1000 Watt

Type	Input	Parallel connectable	Output VDC										Output adjustable		
			5	12	15	24	28	40	48	54	60	69			
D-TOP20LP	100-240VAC		•	•	•	•	•	•	•	•	•	•	•	•	•
D-TOP60	115/230VAC switchable	•	•	•	•	•	•	•	•	•	•	•	•	•	•
D-TOP60W	100-240VAC	•	•	•	•	•	•	•	•	•	•	•	•	•	•
D-TOP60LP	100-240VAC		•	•	•	•	•	•	•	•	•	•	•	•	•
D-TOP75	100-240VAC	•	•	•	•	•	•	•	•	•	•	•	•	•	•
D-TOP120	115/230VAC switchable	•	•	•	•	•	•	•	•	•	•	•	•	•	•
D-TOP120LP	100-240VAC		•	•	•	•	•	•	•	•	•	•	•	•	•
D-TOP140/1	115/230VAC autorange	•	•	•	•	•	•	•	•	•	•	•	•	•	•
D-TOP150	100-240VAC	•	•	•	•	•	•	•	•	•	•	•	•	•	•
D-TOP250	115/230VAC switchable	•	•	•	•	•	•	•	•	•	•	•	•	•	•
D-TOP250/3	3AC, 400VAC	•	•	•	•	•	•	•	•	•	•	•	•	•	•
D-TOP250/3W	3AC, 400-500VAC	•	•	•	•	•	•	•	•	•	•	•	•	•	•
D-TOP500/1	115/230VAC autorange	•	•	•	•	•	•	•	•	•	•	•	•	•	•
D-TOP500/2	100-240VAC	•	•	•	•	•	•	•	•	•	•	•	•	•	•
D-TOP500/3W	3AC, 400-500VAC	•	•	•	•	•	•	•	•	•	•	•	•	•	•
D-TOP1000/3W	3AC, 400-500VAC	•	•	•	•	•	•	•	•	•	•	•	•	•	•

DC-UPS Uninterruptable Power Supplies



DC-UPS with mains connection IB: Integrated battery management



140 Watt - 550 Watt

Type	Input	Output			
		12V	24V	28V	54V
D-TOP140/1-LIB	115/230VAC autorange	•	•	•	•
D-TOP150-IB	100-240VAC	•	•	•	•
D-TOP500/2-IB	100-240VAC	•	•	•	•
D-TOP500/3WIB	3AC 400-500VAC	•	•	•	•

BAT: Battery Management System



Battery module
D-BAT with 12/24VDC
and capacity
of 7Ah or 14Ah

100 Watt - 550 Watt

Type	Voltage	Load current Battery charging current							
		4A 0,35A	6A 0,35A	6A 0,5A	10A 0,5A	12A 0,5A	22A 1,0A	25A 1,0A	
D-TOP-BAT-LCB-12	12,0-15,0VDC	•	•	•	•	•	•	•	
D-TOP-BAT (12V)	11,0-15,0VDC	o.r.	•	•	•	•	•	•	
D-TOP-BAT-LCB-24	22,0-30,0VDC	•	•	•	•	•	•	•	
D-TOP-BAT (24V)	22,0-30,0VDC	•	•	•	•	•	•	•	

Controllable Power Supplies and 19" Versions



Controllable Power Supplies



1000 Watt - 6000 Watt

Type	Input	Controllable output VDC*	Control Interfaces
	3AC 400-500V	0 - 120	analog RS232, Ethernet, PROFIBUS, CANopen etc.
DXC1000/3	●	●	o.r.
DXC3000/3	●	●	o.r.
DXC6000/3	●	●	o.r.

*Versions for controllable output: 0-18VDC / 0-30VDC / 0-36VDC / 0-60VDC / 0-100VDC / 0-120VDC
Special version for pulsed load on request!

With the DXC series Deutronic presents an innovative high technological generation of controllable power supplies, which opens completely new possibilities to industrial processes.

Due to the modular system technology, **application-specific** plant concepts can be implemented by series or parallel connection of the individual modules.
The new and **cost-efficient** technology of the DXC series enables the control of the output current and output voltage (from 0 to nominal value).

The DXC product range can also be delivered as BUS-controlled variants. All BUS-controlled modules have insulated interfaces via fast data opto-couplers with an insulation strength of at least 1500V.

An example for a digital variant is the DX3000/3-CAN-xx.
The control of these variant is done via a 16-bit µC, which in addition to a higher performance has also sufficient storage space for extensive processing programmes for a complex workpiece processing.

19" Power Supplies

Type	Input						Output VDC							
	Type of output*	115/230VAC	100-240VAC	12VDC	24VDC	48VDC	5	12	15	24	28	48	54	69
DN35	s	●					●	●	●	●	●	●	●	●
DN35W	s		●				●	●	●	●	●			
ESU45	s, d, t	●					●/±	●/±	●/±	●/±				
DN60	s	●					●	●	●	●	●	●	●	●
DN60W	s		●				●	●	●	●	●			
ESU60	s, d, t	●					●/±	●/±	●/±	●/±				
ESU100	s, d, t		●				●/±	●/±	●/±	●/±				
ESU160	s	●					●	●	●	●	●	●	●	●
DN120	s	●					●	●	●	●	●	●	●	●

* s=single, d=dual, t=triple

Power Supplies for Devices



Modular Power Supplies



5 Watt - 25 Watt

Type	Input	Type of output*	Output VDC											
			3,3	5	7	9	12	15	18	24	28	48		
DP5M	100-240VAC	s	●	●			●	●		●	●			
DP8M	100-240VAC	s	●	●			●	●		●	●			
EAM5	100-240VAC	s, d	●/±	●/±			●/±	●/±	●/±	●/±	●/±			
DP10E	100-240VAC	s, d	●	●			●	●		●	●			
EAM10	100-240VAC	s, d, t	●/±	●/±			●/±	●/±	●/±	●/±	●/±			●
DP15M	230VAC	s	●	●			●	●		●	●			●
DP15E	230VAC	s, d, t		●			●/±	●/±		●/±	●/±			●
EAM16	100-240VAC	s, d, t	●	●			●	●		●	●			●
DP25M	230VAC	s	●	●	●	●	●	●	●	●	●	●	●	●
DK25	100-240VAC	s, d, t		●			●	●/±	●/±					●

* s=single, d=dual, t=triple

Modular Power Supplies with 30 Watt or more on request!

Flush-mounting Power Supply Modules



12 Watt / 18 Watt

Type	Input	Output VDC		
		5	12	24
DP12UP	100-240VAC	●	●	●
DP18UP NEW	100-240VAC		●	●

Option 'C' with connector

Power Supplies for Devices



E-Line



25 Watt - 500 Watt

Type	Input	Type of output*	Output VDC																		
			3,3	5	7,5	9	12	13,5	15	24	27	48									
ES25	100-240VAC	s		•			•			•	•										
ES40	100-240VAC	s		•			•			•	•										
ES60	100-240VAC	s		•			•			•	•										
ED60/ET60	100-240VAC	d, t		•/±			•/±			±	•										
ES100F	115/230VAC	s		•	•		•			•	•										•
ESP100	100-240VAC	s	•	•	•		•			•	•										•
ED120/EQ120	115/230VAC	d, q		•/±			•/±			/±	•										
ES150	115/230VAC	s		•	•	•	•			•	•										•
ESP150	100-240VAC	s	•	•	•		•			•	•										•
ESP200	100-240VAC	s	•	•	•		•			•	•										•
ES240	115/230VAC	s		•			•			•	•										•
ESP320	100-240VAC	s		•	•		•			•	•										•
ESP500	100-240VAC	s					•			•	•										•

* s=single, d=dual, t=triple, q=quad

Open Frame



10 Watt - 150 Watt

Type	Input	Type of output	Output VDC																		
			3,3	5	7,5	12	13,5	15	24	27	48										
EFM10	100-240VAC	single	•	•		•			•	•											
EFM20	100-240VAC	single	•	•		•			•	•											
EPS30MED	100-240VAC	single	•	•		•			•	•											•
EPS45MED	100-240VAC	single	•	•	•	•			•	•											•
EPS65MED	100-240VAC	single	•	•	•	•			•	•											•
EPS65	100-240VAC	single	•	•	•	•			•	•											•
EPP100	100-240VAC	single	•	•	•	•			•	•											•
EPP150	100-240VAC	single	•	•	•	•			•	•											•

External Power Supplies for Devices



AC Adapter (Plug/Wallmount Version)



5 Watt - 30 Watt

Type	Input	Type of output*	Output VDC																			
			3,3	4,2	5	5,5	6	6,5	7	7,5	8	9	10	12	13,6	15	18	24	28	48	69	
ESC5	100-240VAC	s		•	•		•	•		•	•		•	•		•	•		•	•		
DLS	230VAC	d, t												•/±		•/±		•				
DSP10	100-240VAC	s		•						•			•	•		•	•		•	•		
ESC10	100-240VAC	s	•							•			•	•		•	•		•	•		
ESC15	100-240VAC	s		•						•			•	•		•	•		•	•		
DSP25	100-240VAC	s, d, t		•						•			•	•		•/±		•/±		•	•	
DSP25MED	100-240VAC	s		•						•			•	•		•	•		•	•		
ESC25	100-240VAC	s		•						•			•	•		•	•		•	•		
ESC30	100-240VAC	s		•						•			•	•		•	•		•	•		

* s=single, d=dual, t=triple

AC Adapter (Desktop Version)



5 Watt - 250 Watt

Type	Input	Type of output*	Output VDC																			
			3,3	5	7	7,5	8	9	12	13,5	15	18	19	20	21	24	28	30	36	48	69	
DLT	230VAC	d, t		•									•/±		•/±							
DTP10	100-240VAC	s		•	•					•			•					•	•		•	
ETC20	100-240VAC	s		•	•					•			•	•				•	•		•	
ETH25 MED	100-240VAC	s		•	•					•			•	•				•	•		•	
DTP25	100-240VAC	s, d, t		•	•					•			•/±		•/±						•	
DTP25 MED	100-240VAC	s		•	•					•			•	•				•	•		•	
ETC25	100-240VAC	d		•/±	•/±					•/±			•/±	•/±				•/±				
ETC36	100-240VAC	s		•						•			•	•				•	•		•	
ETH45 MED	100-240VAC	s		•						•			•	•				•	•		•	
ETC45	100-240VAC	s		•						•			•	•				•	•		•	
DTP60	100-240VAC	s		•						•			•	•				•	•		•	
ETC70	100-240VAC	s		•						•			•	•				•	•		•	
ETC100	100-240VAC	s		•						•			•	•				•	•		•	
ETF150 NEW	100-240VAC	s		•						•			•	•				•	•		•	
ETF180 NEW	100-240VAC	s		•						•			•	•				•	•		•	
DTP250 NEW	100-240VAC	s		•						•			•	•				•	•		•	

* s=single, d=dual, t=triple

DC/DC Converter



DC/DC Converter for vehicles and applications with environmental stress



25 Watt - 500 Watt

Type	Input nominal	Output VDC			Galvanic separation
		12/12,5	20	24	
DVC75	48/80VDC	•	•	•	•
DVC100	24/48/80VDC		•	•	•
DVC125	48/80VDC	•	•	•	•
DVC150	48/80VDC	•	•	•	•
DVC250	24/48/80VDC	•	•	•	•
DVC500	12/24/48/80VDC	•	•	•	•

Type	Input nominal	Input tolerance	Output VDC	
			12	24
DR25N	24-96VDC	18-120VDC	•	
DR100N	24-48VDC	18-72VDC	•	
DR100	24/48VDC	24(18-36VDC)/48(33-68VDC)	•	
DR125N	48-80VDC	38-96VDC		•
DR125	48-80VDC	38-96VDC		•
DR150N	48-80VDC	38-96VDC		•
DR160	80VDC	64-96VDC	•	•
DR350	24-80VDC	18-96VDC	•	
DR350	48-80VDC	38-96VDC		•



Example of use: Transport vehicles like trucks and fork lift

DC/DC Converter



DC/DC Converter for PCB mounting and TS-35 rail



0,25 Watt - 200 Watt

Watt	Wide range input	Type of output			Sens-output	Short circuit protection	SIL	DIL	Cabinets mountable	Options
		single	regulated	unregulated						
0,25		s		•						H, 1, 2, SMD
1	2:1	s, d	•	•						H, 1, 2, SMD
1,5		s, d	•			•		•		H, SMD
2	2:1	s, d	•	•		•				H 1, 2, SMD
3	2:1/4:1	s, d	•					•	•	H, M, UL, SMD
6	2:1/4:1	s, d	•					•	•	H, M, UL, SMD
7,5	2:1	s, d	•					•	•	H, SMD
10	2:1/4:1	s, d	•							H
15	2:1	s, d	•							UL, H
20	4:1	s, d	•							UL, H
30	2:1/4:1	s, d, t	•		•					UL, H
50	2:1/4:1	s	•		•					UL, H
75	2:1/4:1	s, d	•		•					UL, H
100	2:1	s	•		•					UL, H
150	2:1	s	•		•					UL, H
200	2:1	s	•		•					UL, H

* s=single, d=dual, t=triple

Output voltage range 2,5 VDC ... 48 VDC
Input voltage range 9 VDC ... 72 VDC

Option:

- 1 Temperature range -25°C bis +85°C
- 2 temperature range -45°C bis +85°C
- H 3kV Insulation voltage
- UL UL-certification
- M Metal case
- SMD SMD version

Switching regulators



7 - 24 Watt

Type	Input	Output VDC			
		4,7-6VDC	9-32VDC	16-32VDC	3,3 5 12 15
EDR		•	•	•	•

5 - 20 Watt

Type	Input	Output VDC				
		7-36VDC	14-36VDC	26-36VDC	5,1 7 12 15 24	
DR1		•	•	•	•	•

DC/DC Converter



High voltage modules



1,5 Watt

Type	Input	Output VDC							
		500	-500	1000	-1000	2000	-2000	3000	-3000
DH12	12VDC (2-12V)	•	•	•	•	•	•	•	•
DH24	24VDC (2-24V)	•	•	•	•	•	•	•	•

Also available: DHP series with galvanic insulation

D-TOP DC/DC Converter for TS-35 rail



60 Watt - 120 Watt

Type	Input				Output VDC				
	18-36VDC	36-80VDC	40-90VDC	60-120VDC	80-170VDC	12	15	24	60
DCM60	•	•		•	•	•	•	•	•
DCM120			•	•	•	•	•	•	•
DCM120L	•	•				•	o.r.	•	

DC/DC Converter for 19" mounting



60 Watt - 100 Watt

Type	Input			Output VDC				
	Type of output*	12VDC	24VDC	48VDC	5	12	15	24
EDU60	s, d, t	•	•	•	●/±	●/±	●/±	●/±
EDU100	s, d, t	•	•	•	●/±	●/±	●/±	●/±

* s=single, d=dual, t=triple

Intelligent Charging Computer



DBL300



DBL800



DBL1700/3W

29 Watt - 5000 Watt

Type	Power	Input Voltage	Output Voltage			Version			
			7	14	28	Standard	B	BM	M
BM2000	29/43 Watt	230VAC	•	•	•	•			
DBL300	300 Watt	100-240VAC		•	•	•			
DBL700	700 Watt	100-240VAC		•	•	•			
DBL800	800 Watt	100-240VAC		•	o.r.	•	•	•	•
DBL1200	1200 Watt	100-240VAC		•	o.r.	•	•	o.r.	o.r.
DBL1600	1600 Watt	100-240VAC		•	o.r.	•	•	o.r.	o.r.
DBL1700/3W	1700 Watt	3AC 400-500VAC		•	o.r.	G2	•		
DBL2300/3W	2300 Watt	3AC 400-500VAC		•	o.r.	G2	•		

Special versions e.g. DBL1200/3W, DBL2700, DBL5500/3W on request

Standards:

EN60335, EN60950, UL508, UL1236, EN55011, EN61000-3-2, EN61046, EN61000-6-2

Features:

- Short charging time due to high power reserve
- Microprocessor controlled charging, measuring and monitoring function
- Switchable as external power supply
- Developed to supply vehicle on-board electronic systems
- Function-optimized for workshop and production
- Utilized and approved by well known automotive manufacturers
- International safety certifications for worldwide use
- Sparking suppression via time-delayed power activation (accident prevention according to health and safety at work regulations)
- Extensive protection functions and self-protection functions (short circuit and reverse polarity protection)
- Communication solutions for system safety
- Optimized, easy handling
- Menu navigation in German, English, Spanish, French, Italian
- Communication interface for integration of the charger into existing or planned factory networks (potential free relay and RS232, optional PROFIBUS, ETH etc.)
- Big graphic display for considerably improved visualization and self-explaining menu navigation
- 100% protection of the car's on-board electronic system by leading charging technologies

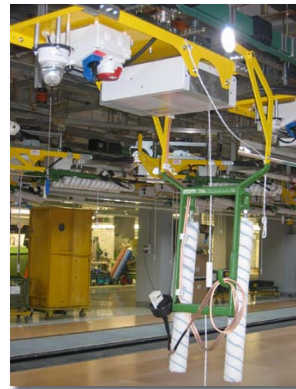
For more information and data sheets see
www.deutronic.com

Conveying Systems and Recharge Stations



In a worldwide cooperation with different manufacturers of conveying systems our battery chargers are offered and installed in complete systems.

The project engineering is done in a close cooperation with our system partners.



Customized mounting solutions are deliverable on request



DBL800 with trafo for conveying systems



DIPL430 with mounting kit and signal lamp

Test and Measurement Systems



Deutronic test systems for production and certification tests



- ⇒ Individual function and production tests for your devices and components
- ⇒ Reliable and cost-efficient test procedures
- ⇒ Minimised examining times and production costs
- ⇒ Increasing production performance
- ⇒ Information, documentation und storage
- ⇒ Custom-made solutions for your application

The construction phase of a system is more cost-efficient and better to realize in shorter time due to configuration of available basic modules with the test system software VITES.

Many requirements - one solution!

System control
System check
System adjustment
System security

Information system
Quality data
Management information
Statistics

Programming
Program generation
Test programs

Documentation
Technical documents
Test specification
Technical drawings

**VITES
Tester
Software**

Data logging
Failure journal
Measurements
Data test devices

Communication
Data transmission
Remote control
Remote diagnosis

Test and Measurement Systems



Customized test system
The multifunctional active test system – custom-made solution for your application



Test system for choke or transformer
Automatic test system DTS-TR for design and series testing of choke or transformers



Motor test system
Automatic test system DTS-MT for design and series testing of motors



Rotary plate test system for electrical examinations
Automatic test system DTS-DT for safety tests in production.



Functional test system for power supplies
Automatic test system DTS-PS for design and series testing of power supply units and DC/DC- converters



Transformer test system
Automatic test system DTS-TR for series and design testing of mains transformers



Electrical safety tester for safety test
Automatic test system DTS-ST for electrical safety test of instruments, appliances and assemblies



RUN-IN test system for electric modules
Automatic test system DTS-RI for the RUN-IN of electrical modules

Customized Design



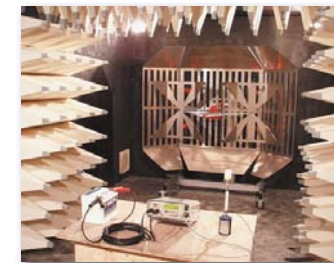
Avoid that anybody in the world is reverse engineering your devices!

The solution:

- Custom-made, customized devices within the EDWANZ partner companies. Pack Power Electronics + Process Engineering + Software together into your equipment.
- Combine the benefits and experience of mass-produced devices to a custom-made industrial one.
- Use the know-how of the Edwanz group. Together with several development teams and our own EMC laboratory we are at your disposal.
- Power Supplies, power electronics, process technology, software, construction, production - from a small DC/DC convertes up to a complete function machine.
- Certifications UL, VDE, TÜV, VDS.

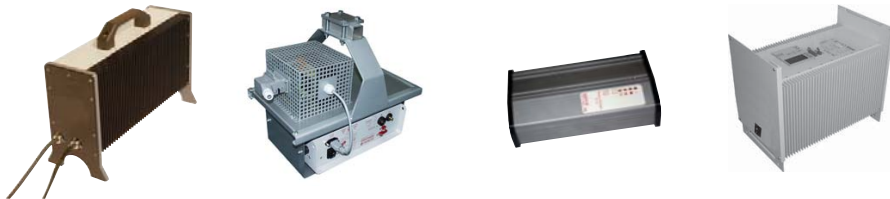
EMC Laboratory

- EMC - examination
- CE - conformation examination
- Development support examination
- EMC - consulting
- Proposals for solutions to the fault clearance





Solutions for the field of battery chargers:



Customized power supply modules:



Individual versions of DC-DC converters and high voltage converters:



More solutions:



DSSE3000/DSSE6000
Static excitation for three-phase synchronous generators in small and middle power stations

Every manager of a power station knows the typical problems, up to interruption for many days:

- ◆ wear on the exciter
- ◆ high loss in the exciter field
- ◆ pollution by coal dust (fines)
- ◆ high expenditure of servicing
- ◆ high repair and maintenance costs
- ◆ procurement of the suitable types of carbon brush

This often causes interruptions of the system.

Deutronic developed the DSSE3000/DSSE6000 for these reasons.

The main-shaft-mounted auxiliary generator is replaced by an electronic rectifier excitation with extremely robust MIL components.

These are the advantages:

- ◆ no down times for carbon brush change
- ◆ no coal dust (fines)
- ◆ no commutator problems
- ◆ no more remove material by machining

Voltage and cos φ-controller are simply to realize with standard components. Detailed fault indicators are available at the interface of the DSSE.

More details see www.deutronic.com/systemtechnik





We bundle our know-how and strenght for you



Deutronic Test System

Components

Development
Project management
Software (Vites)
System production
Power Supply
Know-how
Training, maintenance
Gauging-/BUS-connection



Consolidated Companies



Cabinet production
Construction
Transformers
Know-how



Bus-system
Development
Industrial networking
Control technology
Visualization



Development
Construction



Customized complete technical machines

everything out of one hand

- ▶ Project planning
- ▶ Development
- ▶ Construction

- ▶ Production
- ▶ Commissioning
- ▶ Service



Base, Cupboards
Module Rack,
Glass Fibre Termination
and Distribution Technology



Power Supply
Assembly Groups



Automatic Ticket Machines



Customer-Specific Terminals



Toroidal core transformers
and modules



Industry PC,
Router, Server



Medical
transformers

- ▶ Certified acc. to ISO 9001
- ▶ Various DIN/EN/IEC/UL approvals
- ▶ C3 welding approval

www.sedlbauer.de

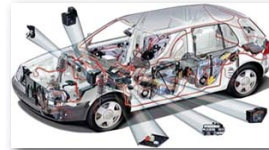
Sedlbauer AG ■ Wilhelm-Sedlbauer-Str. 2 ■ 94481 Grafenau
Phone: +49 (0)8552 41-0 ■ Fax: +49 (0)8552 41-265



Professional System Automation

▶ Automotive

Hardware and firmware for car electronics



▶ Embedded Systems

Smart electronics and firmware for devices controlling

▶ Test System Automation

Automation of test devices and test stands



▶ Technical consultancy and product specifications creation

▶ Project planning and automation



▶ System integration and commissioning

▶ Hardware, firmware and software development

▶ Circuit design, layout and prototype production



www.b-plus.com

Austria
recomatic
electronics

Tel.: +43 1 979 250 6-0
www.recomatic.at

Belgium



Tel.: +32 53 80 13 69
www.vglequipment.be

England



Tel.: +44 1527 52 78 82
www.cirrustesting.com

India



Tel.: +91 11 23316123
E-Mail: raiauto@airtelbroadband.in

Israel



Tel.: +972 644 0044
www.elmag.co.il

Netherlands



Tel.: +31 10 2640 27-0
www.elincom.nl

Spain



Tel.: +34 9365 925 31
www.cerc.es

Turkey



Tel.: +90 212 285 01 67
www.bakirci.com.tr

Asia
D-ASIA
trading

Tel.: +852 2791 7601
E-Mail: fennytd@d-asia-trading.com

China



Tel.: +86 10 8768 9891
www.inchwell.com.cn

Finland



Tel.: +358 2 277 25 21
www.intertrafo.fi

India



Tel.: +91 731 2422 330
www.scientificindia.com

Japan



Tel.: +81 - 45-562-4483
www.jatek.co.jp

Netherlands



Tel.: +31 180-466004
www.hiflex.nl

Spain



Tel.: +34 9021 965 39
www.gitec-control.com

USA



Tel.: +1 614 873-3488
www.genesisautomationonline.com

Australia



Tel.: +61 2 9519 6650
www.indcontrol.com.au

Denmark



Tel.: +45 661129-89
www.scancomp.dk

Germany



Tel.: +49 6056 90057-0
www.sickert-hafner.de

Indonesia



Tel.: +62 21 4584 5282
www.spektrum-krisindo.com

Korea



Tel.: +82 2 3158 4457-0
E-Mail: smbglobal@hanafos.com

Russia



Tel.: +7 812 3208825
E-Mail: helen@elim.ru

Switzerland



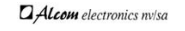
Tel.: +41 434 808 1
www.suk.ch

USA



Tel.: +1 941 927-1414
www.baumtools.com

Belgium



Tel.: +32 458 303 3
www.alcom.be

Egypt



Tel.: +20 237 82 540
E-Mail: actcontrol@link.net

Hungary



Tel.: +36 (1) 285 2612
www.diex.hu

Iceland



Tel.: +354 555-4745
www.spennubreytar.is

Mexico



Tel.: +52 222 244 4300
www.maxpower.com.mx

South Africa



Tel.: +27 12 653 0008
www.sabertek.co.za

Czech Republic



Tel.: +420 383 381-100
E-Mail: m.rychly@cz.edwanz.com

USA



Tel.: +1 864 247 1652
www.subsri.com

Worldwide Service



DEUTRONIC enlarges the partner network continuously to offer our customers the best possible and fastest service.



Information about our worldwide service centers you will find on our web page
www.deutronic.com/service

All data at nominal input, full load and 25° C ambient temperature, if not marked otherwise. Technical modifications and mistakes reserved. Products are described by information contained in catalogs and datasheets. It is not be considered as assured qualities Stresses listed under „Maximum Rating“ (one at a time) may be applied to devices without resulting in permanent damage. The operation of the equipment for extended periods may affect device reliability. Limiting value tolerance are subject to usual fluctuation margins.

Contact



Your Contact

Please send me the following catalogue

<input type="checkbox"/> 	<input type="checkbox"/> 	<input type="checkbox"/>
<input type="checkbox"/> 	<input type="checkbox"/> 	<input type="checkbox"/> german <input type="checkbox"/> english

Company _____	Customer No. _____
Name _____	Zip Code, City _____
Department _____	Phone _____
Position _____	Fax _____
Street _____	E-Mail _____
	Internet _____